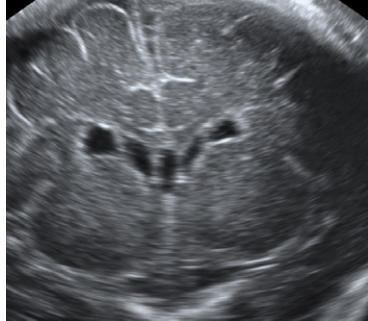


# ISUOG Education 2018



## Advanced fetal neurosonography

When do I need to refer for fetal MRI?

**7-8 December 2018**

**London, UK & live stream globally**

### Course chairs

*G. Maligner (Israel); D. Prayer (Austria)*

### Key topics

- Is there a place for MRI in the diagnosis of brain malformations before 20 weeks?
- When do you need MRI in the diagnosis of callosal anomalies?
- Is MRI an important tool in the formal assessment of ventriculomegaly?
- Should all fetuses with a suspected brain anomaly have an MRI?



LIVE STREAM



LONDON



NEUROLOGY



MRI



EXPERTS



CME

**Register  
now ▶**

### Faculty

*G. Maligner (Israel)  
A. Papageorgiou (UK)  
G. Pilu (Italy)  
D. Prayer (Austria)*

### About the course

Relevant to all clinicians performing anatomical ultrasound scans, this course will provide a review of the MERIDIAN study results and explore the role of neurosonography and fetal MRI in predicting outcomes.

Improve your knowledge of fetal neurosonographic examinations before and after 20 weeks and learn advanced MRI techniques and their applications in clinical practice.

### Fees

**Onsite:**

**Onsite sonographer/trainee:**

**Live stream:**

### ISUOG member

**£325**

**£180**

**£130**

### Non-member\*

**£395**

**£255**

**£200**

\*Fees for non-members include ISUOG basic membership for one year, starting from the time of the course.

Find out more at [isuog.org/events.html](http://isuog.org/events.html)  
[congress@isuog.org](mailto:congress@isuog.org) | +44 (0)20 7471 9955

 **isuog**.org

# Advanced fetal neurosonography

## When do I need to refer for fetal MRI?



### Friday 7 December 2018

- 09:00 Welcome and Introduction
- 09:15 Preconference knowledge assessment
- 09:45 Fetal neurosonography in the first trimester of pregnancy
- 10:15 Fetal neurosonography examination before 20 weeks
- 10:45 Refreshment break
- 11:05 Brain malformations diagnosed before 20 weeks. Is there a place for MRI?
- 11:35 Fetal neurosonography examination after 20 weeks
- 12:20 Fetal brain MRI examination after 20 weeks
- 12:50 The MERIDEAN Study: methods and results
- 13:20 Lunch
- 14:20 Debate: All fetuses with a suspected brain abnormality should have an MRI
- 14:50 NTD US/MRI in predicting outcome
- 15:20 Refreshment break
- 15:40 Is it possible to accurately
- 16:55 diagnose all cerebellar pathologies?

### Saturday 8 December 2018

- 09:00 Neurosonography and malformations of cortical development
- 09:45 MRI and malformations of cortical development
- 10:30 Refreshment break
- 10:50 Callosal anomalies: when do you need MRI?
- 11:35 Debate: MRI is an important tool in formal assessment of ventriculomegaly
- 12:05 Advanced MRI sequences and their possible applications in clinical practice
- 12:35 Lunch
- 13:35 Traumatic brain injury
- 14:20 Suspected T2 intensity changes in fetuses with proved CMV infection. False positive? What happens with US?
- 15:05 Refreshment break
- 15:25 Cases and open
- 16:25 discussion

Please note that this is a provisional program which may change. Check the ISUOG website for latest updates.

**When does the live stream start in your time zone:**

**GMT: 09:00 | CET: 10:00 | EET: 11:00**

#### About ISUOG Education

ISUOG delivers quality education courses internationally in Ultrasound in Obstetrics and Gynecology, providing up-to-date research and clinical guidance for a range of topics and professional levels. Our courses are dynamic, interactive and provide delegates with practical tips as well as excellent networking opportunities.

Find out more at [isuog.org/events.html](https://isuog.org/events.html)  
[congress@isuog.org](mailto:congress@isuog.org) | +44 (0)20 7471 9955

